

Nixel Teamwork Collaborative Intranet

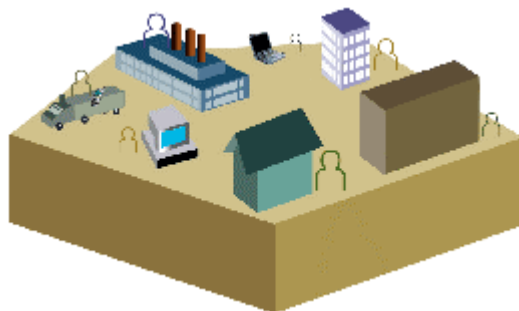
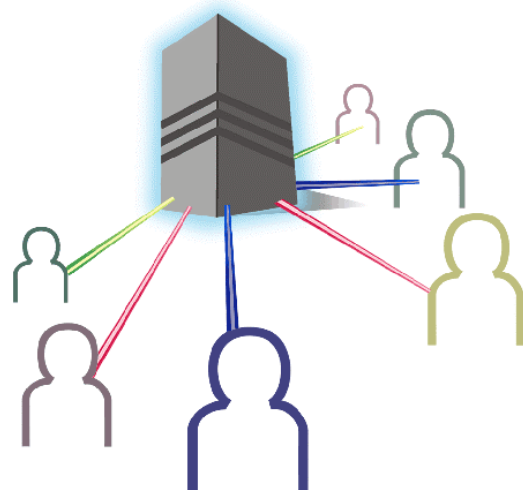
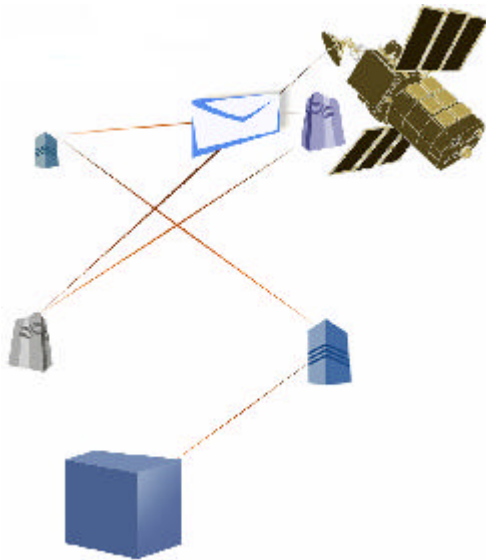
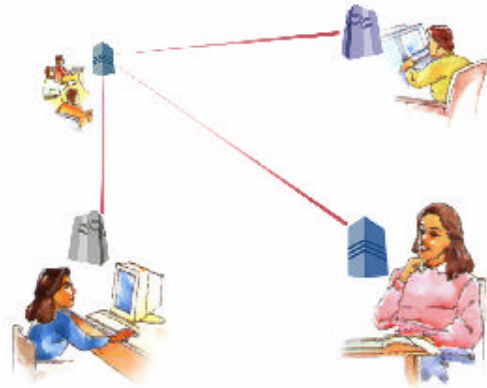
Teamwork in the digital age



Nixel Teamwork Collaborative Intranet

Nixel Teamwork Collaborative Intranet offers a digital environment that binds organizations and their people together. A web architecture, simple, customizable user interfaces, component modules that can be easily assembled together and a strong design provide a framework that can be rapidly deployed.

Nixel Teamwork provides features for communications, knowledge sharing, active team work, group communications and special modules for various businesses and organizational cultures.



Nixel Teamwork

Nixel Teamwork provides a software environment over which Enterprise Integration can be addressed. The software has the following principal components.

1. Enterprise Digital Foundation
2. Organizational Communication
3. Collaboration
4. People Binder
5. Knowledge Repository

Enterprise Digital Foundation

- Built using the Microsoft software environment
- Harnesses the robust Microsoft SQL Server database manager
- Web browser front end
- Central administration console
- Customizable to suit business mission
- User personalization for greater participation

Organizational Communication

- News
- Announcements
- Policies & Procedures
- House Journal Publishing
- Newsletter Subscriptions
- Search & filter communications

Collaboration

- Internal Communications
- Message Boards
- Who's Online
- Live Chat
- Search & filter messages

People Binder

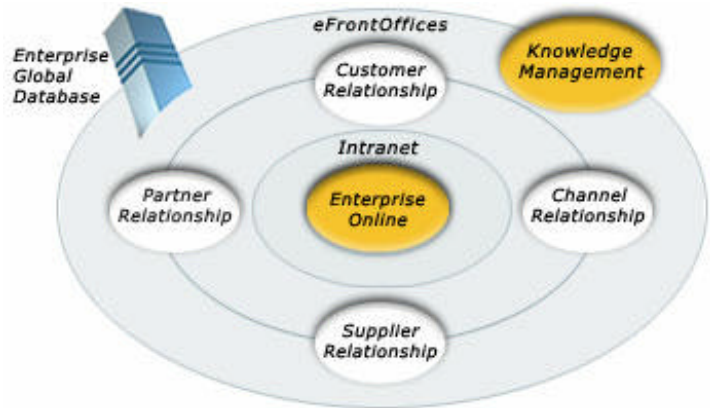
- People Profiles
- Online Directory
- Search & filter people
- Celebrations - Birthdays, Anniversaries, Arrivals, Events
- Suggestion Program
- Polls & Surveys
- Thought for the Day, Jokes, Photographs, etc

Knowledge Repository

- Documents
- Articles & Notes
- Web Resources
- Search & filter content

Building the digital enterprise

Nixel architects and delivers Enterprise Solutions for corporations that see information technology, knowledge and automation as being key drivers of growth and competitiveness. Founded in 1991 and headquartered at Mumbai, Nixel has been a committed partner for many corporations in India, the United States and Europe including Air India, Asea Brown Boveri, Associated Cement Companies, BEC Group, Bharat Petroleum, Essar Group, Godrej & Boyce, Hindustan Construction, Indian Oil, Kotak Mahindra, Larsen & Toubro, Novartis, Reliance Industries, Siemens, Toyo Engineering and Uhde India. Fired by a missionary zeal to build digital infrastructure and systems for enterprises, Nixel has helped customers improve productivity, quality and competitive advantage and transform themselves into globally connected organizations.



Quality
on
time

Quality on Time

Quality on Time is a unique methodology that we've created that helps us deliver and deploy sophisticated software within demanding schedules. A structured process that extends from the initial interactions with customers all the way through to deployment, training & support, the Nixel methodology assures quality and performance consistently.

A great team to work with

A team of technology architects, application specialists, project managers, developers and quality engineers, the Nixel team is innovating and researching all the time, staying abreast of global developments and ensuring sophisticated tools and methods are used in the design and development of the software.



24 x 7 x 52

Nixel is never out of range for our customers and well-wishers. From relationship managers to project managers through multiple interfaces including a strong web front office, Nixel ensures that you have all the expertise, know-how, software, drivers and information that you need, to use our solutions and enhance your organizational productivity, quality and competitive advantage.



To know more about Nixel and all the solutions, products and services we offer, we invite you to visit www.nixel.com

Nixel Technology

H-501, Kukreja Complex,
LBS Marg, Bhandup West,
Mumbai 400078
India

Telephone : 91-22-5916463
Fax: 91-22-5922394
Email: sales@nixel.com

Nixel, Nixel Technology, nixel.com, Enterprise Online, enPowering Knowledge, KnowledgeNet and Quality on Time are all trademarks of Nixel Technology. All Rights Reserved.

All other trademarks mentioned in this document are property of their respective owners.

This document and its contents are property of Nixel Technology. They may not be copied or used in any manner whatsoever, in part of whole, without the express permission of Nixel Technology.

December, 2001